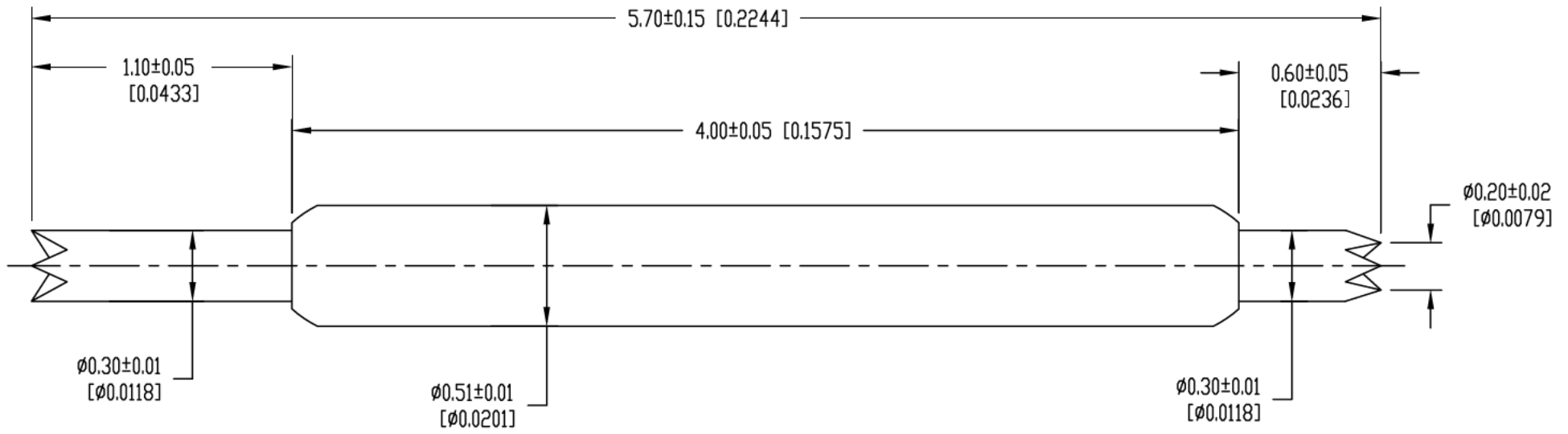


REV	DESCRIPTION	DATE	BY
A	NEW DRAWING	03/06/13	JAG

SKT3892



POINTING ACCURACY: ±0.045mm

SPRING FORCE [±20%]  
 12.2g (0.430oz) at INITIAL TRAVEL  
 23.0g (0.811oz) at 0.65mm (0.0256) RECOMMENDED TRAVEL  
 28.9g (1.019oz) at 1.00mm (0.0394) FULL TRAVEL

PART	MATERIAL	FINISH
PLUNGER	HARDENED BeCu	GOLD PLATED
BARREL	PHOSPHOR BRONZE	GOLD PLATED
SPRING	MUSIC WIRE	GOLD PLATED

SCALE 1.5:1

UNLESS OTHERWISE SPECIFIED:  
 DIMENSIONS ARE IN MILLIMETERS  
 TOLERANCES ARE:  
 DECIMALS: .XX ±0.100MM .XX ±1.0°  
 .XX ±0.050MM .XX ±0.5°  
 X.XXX ±0.025MM

**ALL DIMENSIONS ARE IN MILLIMETERS UNLESS OTHERWISE SPECIFIED**

**EMULATION TECHNOLOGY, INC.**  
 — VLSI and SMT ADAPTERS and ACCESSORIES —

**759 FLYNN ROAD**  
**CAMARILLO, CA 93012**

**TEL: (805) 383-8480**  
**FAX: (805) 383-8484**

SHEET: <b>1 OF 1</b>	DATE: <b>03/06/13</b>	REVISION: <b>A</b>	<b>ASSEMBLY DRAWING</b>
CHECKED:	DRAWN: <b>J. GELACIO</b>	ITEM: <b>POGO-PIN-5.70-C</b>	
<b>DO NOT SCALE DRAWING</b>			DESCRIPTION: <b>POGO-PIN-5.70-C</b>